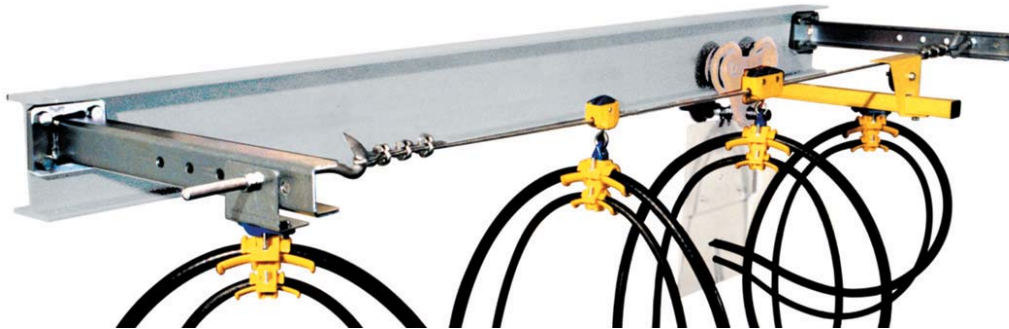


CABLE TROLLEYS

Range of options



Sheet 11-00 2012



6 mm steel wire:

Trolleys for round cable
Cable load 3 kg
Cable load 6 kg

Trolleys for flat cable
Cable load 6 kg



C-rails:

Trolleys for round cable
C-30 rail, Cable load 20 kg
C-40 rail, Cable load 32 kg
Trolleys for tool suspension available for both C-30 & C-40 rails

Trolleys for flat cable
C-30 rail, Cable load 20 kg
C-40 rail, Cable load 32 kg



I-Beam:

Trolleys for round cable
Cable load 10 kg
Cable load 20 kg

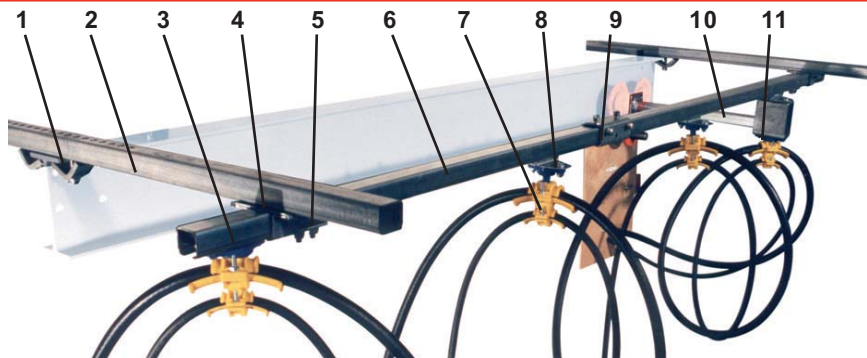
Trolleys for flat cable
Cable load 10 kg
Cable load 20 kg



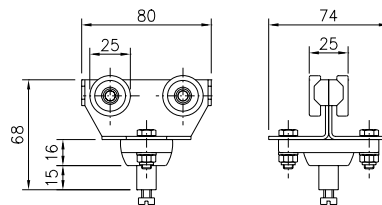
CABLE TROLLEYS for C-rail 30x32 mm Roundcable



Sheet 11-30 2012



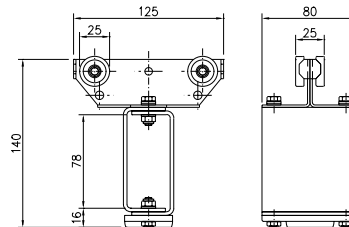
1. Girder clips
2. Support arm
3. End clamp
4. Support bracket
5. End stop
6. C-rail
7. Cable clamp
8. Cable trolley
9. Track coupler
10. Towing arm
11. Towing trolley



Cable trolley with 4 wheels for round cable

Material: Galvanized steel body
Wheel with dustproof bearings
Polyamide ball joint

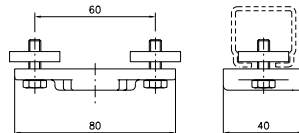
Cable load, kg: 20
Weight, kg: 0,26
Article No.: 62200434



Towing trolley

Material: Galvanized steel body and towing box
Wheel with dustproof bearings
Polyamide affixing plate

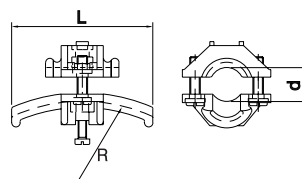
Cable load, kg: 20
Weight, kg: 0,57
Article No.: 62200435



End clamp

Material: Polyamide, Galvanized steel

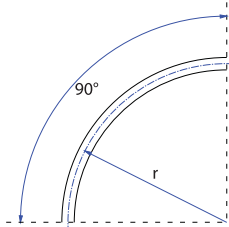
Weight, kg: 0,09
Article No.: 62200436



Adjustable clamps for cable or hose

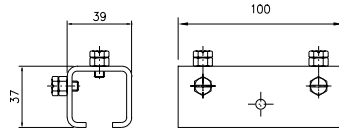
Material: Polyamide

Diam., mm:	10 - 16	17 - 25	26 - 36
Radius, mm:	80	125	160
Length, mm:	70	100	140
Weight, kg:	0,04	0,06	0,12
Article No.:	62200437	62200438	62200439

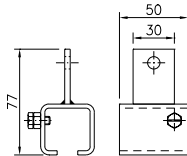


Curve made from rail
Material: Galvanized steel

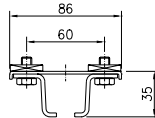
Article No.	Radius, mm	Curvelength, mm	Max. trolley-distance, mm	Max. trolley-Length, mm	Weight, kg
62200426	1000	1570	700	160	2,45



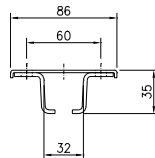
Track coupler
Material: Galvanized steel
Vi kt, kg: 0,28
Best. nr: 62200423



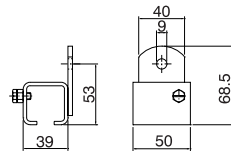
Support bracket med vertikalplatta
Material: Galvanized steel
Weight, kg: 0,20
Article No.: 62200423



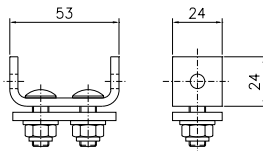
Support bracket with square nuts
Material: Galvanized steel
Weight, kg: 0,24
Article No.: 62200427



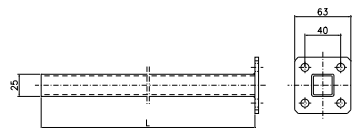
Support bracket for ceiling mounting
Material: Galvanized steel
Weight, kg: 0,16
Article No.: 62200428



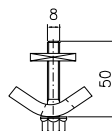
Support bracket for wall mounting
Material: Galvanized steel
Weight, kg: 0,20
Article No.: 62200429



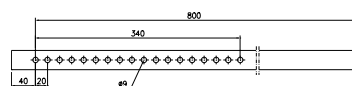
End stop
Material: Galvanized steel
Weight, kg: 0,13
Article No.: 62200425



Towing arm
Material: Galvanized steel
Length, mm: 400 630
Weight, kg: 0,6 0,8
Article No.: 62200430
62200431



Girder clips (2 for each Support arm)
Material: Galvanized steel
Weight, kg: 0,15
Article No.: 62200433



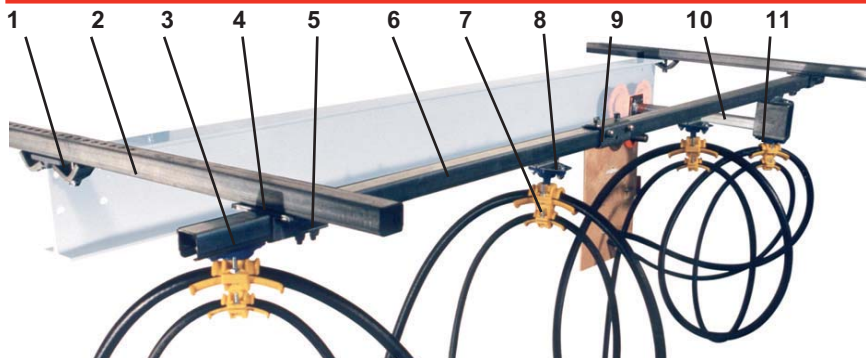
Support arm
Material: Galvanized steel
Length, mm: 800
Weight, kg: 1,25
Article No.: 62200432

CABLE TROLLEYS

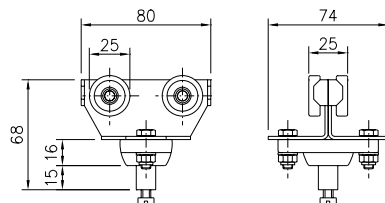
Acid proof, Stainless steel for C-rail, 30x32 mm. Round cable



Sheet 11-30S 2012



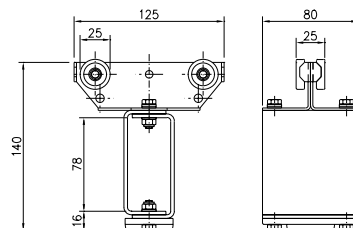
1. Girder clips
2. Support arm
3. End clamp
4. Support bracket
5. End stop
6. C-rail
7. Cable clamp
8. Cable trolley
9. Track coupler
10. Towing arm
11. Towing trolley



Cable trolley with 4 wheels for round cable

Material: Acid proof steel SS 2343 (body)
Stainless & dustproof bearings
polyamide (ball joint)
Acid proof steel A4 (nuts & bolts)

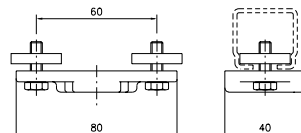
Cable load, kg: 20
Weight, kg: 0,26
Article no.: on request



Towing trolley

Material: Acid proof steel SS 2343 (body)
Stainless & dustproof bearings
polyamide (affixing plate)
Acid proof steel A4 (nuts & bolts)

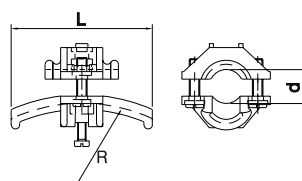
Cable load, kg: 20
Weight, kg: 0,57
Article no.: on request



Affixing plate for cable clamp

Material: Polyamide
Acid proof steel A4 (nuts & bolts)

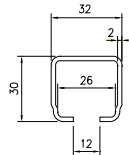
Weight, kg: 0,09
Article no.: on request



Adjustable clamp for cable or hose

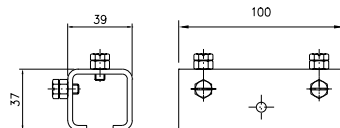
Material: Polyamide
Acid proof steel A4 (nuts & bolts)

Diam., mm:	10 - 16	17 - 25	26 - 36
Radius, mm:	80	125	160
Length, mm:	70	100	140
Weight, kg:	0,04	0,06	0,12
Article no.:	on request		



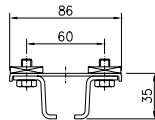
C-rail

Material: Acid proof steel SS 2343
 Length, mm: 4000 6000
 Weight, kg: 6,2 9,3
 Article no.: on request



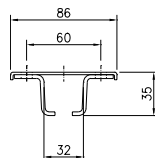
Track coupler

Material: Acid proof steel SS 2343
 Weight, kg: 0,28
 Article no.: on request



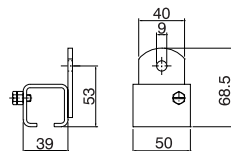
Support bracket with square nuts

Material: Acid proof steel SS 2343
 Weight, kg: 0,24
 Article no.: on request



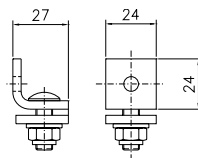
Support bracket for ceiling mounting

Material: Acid proof steel SS 2343
 Weight, kg: 0,16
 Article no.: on request



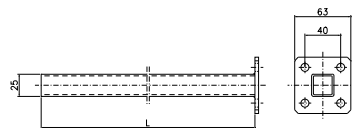
Support bracket for wall mounting

Material: Acid proof steel SS 2343
 Weight, kg: 0,20
 Article no.: on request



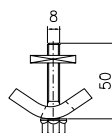
End stop

Material: Acid proof steel SS 2343
 Weight, kg: 0,13
 Article no.: on request



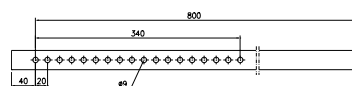
Towing arm

Material: Acid proof steel SS 2343
 Length, mm: 400
 Weight, kg: 0,6
 Article no.: on request



Girder clips 2 for each support arm

Material: Acid proof steel SS 2343
 Weight, kg: 0,15
 Article no.: on request



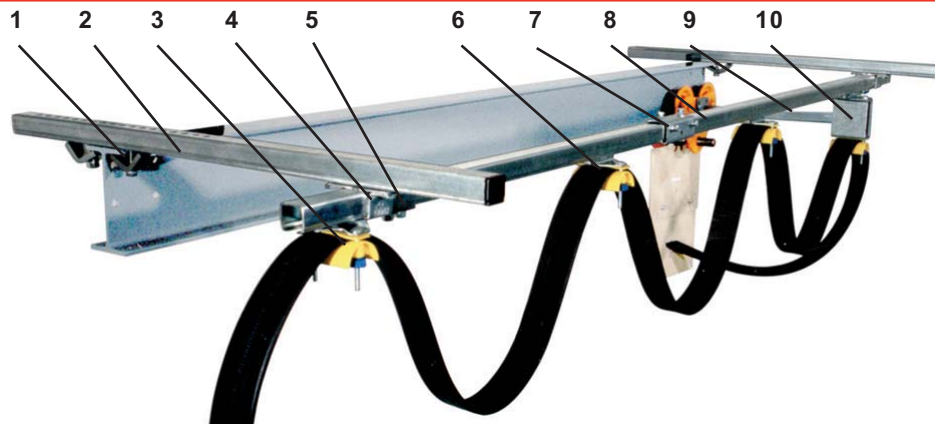
Support arm

Material: Acid proof steel SS 2343
 Length, mm: 800
 Weight, kg: 1,25
 Article no.: on request

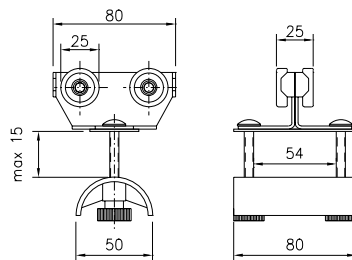
CABLE TROLLEYS for C-rail 30x32 mm Flatcable



Sheet 11-32 2012



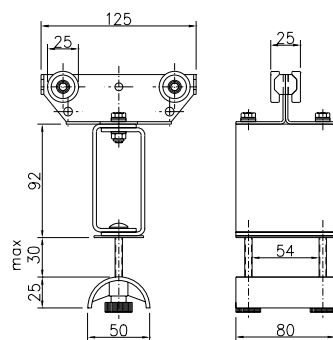
1. Girder clips
2. Support arm
3. End clamp
4. Support bracket
5. End stop
6. Cable trolley
7. Track coupler
8. C-rail
9. Towing arm
10. Towing trolley



Cable trolley with 4 wheels for flat cable

Material: Galvanized steel body
Wheel with dustproof bearings
Polyamide Cable clamp

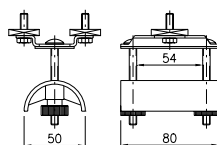
Cable load, kg: 20
Weight, kg: 0,28
Article No.: 62200421



Towing trolley

Material: Galvanized steel body and towing box
Wheel with dustproof bearings
Polyamide Cable clamp

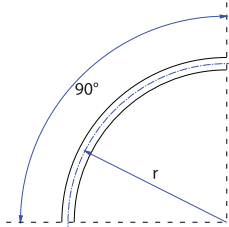
Cable load, kg: 20
Weight, kg: 0,6
Article No.: 62200420



End clamp

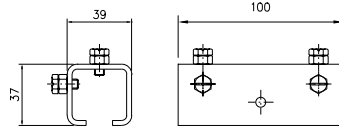
Material: Polyamide, Galvanized steel

Weight, kg: 0,2
Article No.: 62200422



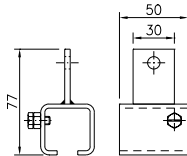
Curve made from rail
Material: Galvanized steel

Article No.	Radius, mm	Curvelength, mm	Max. trolley-distance, mm	Max. trolley-Length, mm	Weight, kg
62200426	1000	1570	700	160	2,45



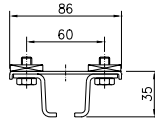
Track coupler

Material: Galvanized steel
Vi kt, kg: 0,28
Best. nr: 62200423



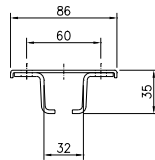
Support bracket med vertikalplatta

Material: Galvanized steel
Weight, kg: 0,20
Article No.: 62200423



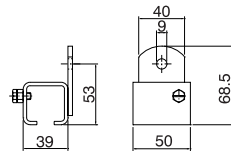
Support bracket with square nuts

Material: Galvanized steel
Weight, kg: 0,24
Article No.: 62200427



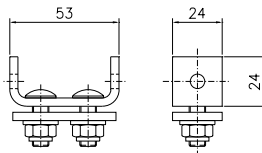
Support bracket for ceiling mounting

Material: Galvanized steel
Weight, kg: 0,16
Article No.: 62200428



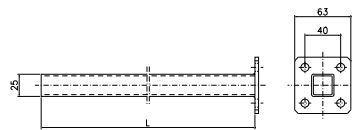
Support bracket for wall mounting

Material: Galvanized steel
Weight, kg: 0,20
Article No.: 62200429



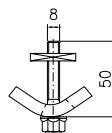
End stop

Material: Galvanized steel
Weight, kg: 0,13
Article No.: 62200425



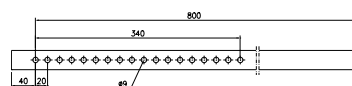
Towing arm

Material: Galvanized steel
Length, mm: 400 630
Weight, kg: 0,6 0,8
Article No.: 62200430 62200431



Girder clips (2 for each Support arm)

Material: Galvanized steel
Weight, kg: 0,15
Article No.: 62200433



Support arm

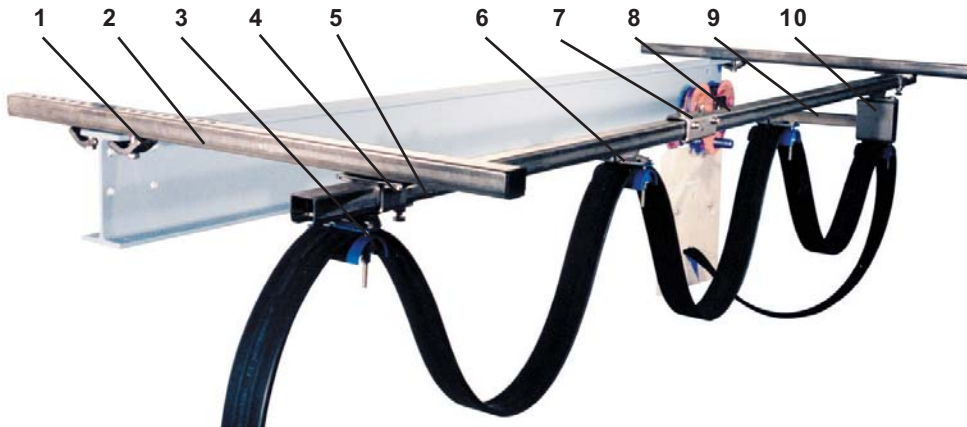
Material: Galvanized steel
Length, mm: 800
Weight, kg: 1,25
Article No.: 62200432

CABLE TROLLEYS

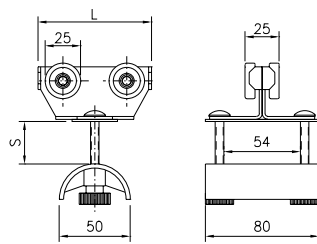
Acid proof, Stainless steel for C-rail, 30x32 mm. Flat cable



Sheet 11-32S 2011



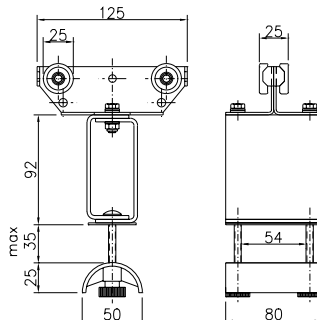
1. Girder clips
2. Support arm
3. End clamp
4. Support bracket
5. End stop
6. Cable trolley
7. Track coupler
8. C-rail
9. Towing arm
10. Towing trolley



Cable trolley flatcable

Material: Acid proof steel SS 2343 (body)
Stainless & dust-proof bearings
Polyamide (cable clamp)
Acid proof steel A4 (Nuts & bolts)

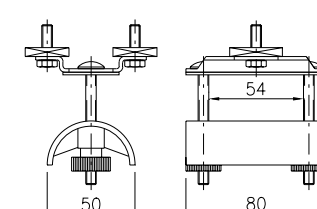
Cable load, kg: 20
Weight, kg: 0,28 0,36
L, mm: 80 125
S, mm: 15 35
Article No.: on request on request



Towing trolley flatcable

Material: Acid proof steel SS 2343 (body)
Stainless & dust-proof bearings
Polyamide (cable clamp)
Acid proof steel A4 (Nuts & bolts)

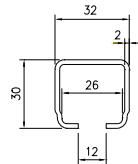
Cable load, kg: 20
Weight, kg: 0,6
Article No.: on request



End clamp flatcable

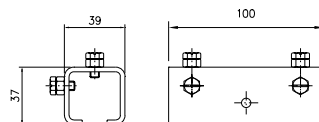
Material: Acid proof steel SS 2343 (body)
Polyamide (cable clamp)
Acid proof steel A4 (Nuts & bolts)

Weight, kg: 0,2
Article No.: on request



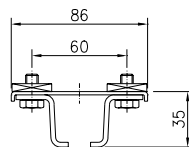
C-rail

Material: Acid proof steel SS2343
 Length, mm: 4000 6000
 Weight, kg: 6,2 9,3
 Article No.: on request



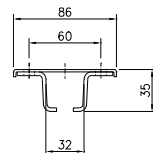
Track coupler

Material: Acid proof steel SS2343
 Weight, kg: 0,28
 Article No.: on request



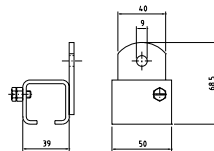
Support bracket with square nuts

Material: Acid proof steel SS2343
 Weight, kg: 0,24
 Article No.: on request



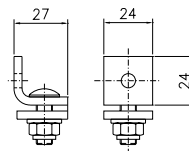
Support bracket for ceiling mounting

Material: Acid proof steel SS2343
 Weight, kg: 0,16
 Article No.: on request



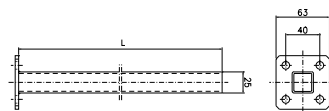
Support bracket for wall mounting

Material: Acid proof steel SS2343
 Weight, kg: 0,20
 Article No.: on request



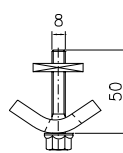
End stop

Material: Acid proof steel SS2343
 Weight, kg: 0,13
 Article No.: on request



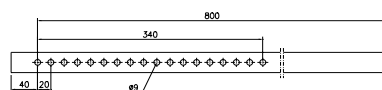
Towing arm

Material: Acid proof steel SS2343
 Length, mm: 400
 Weight, kg: 0,6
 Article No.: on request



Girder clips (two for each support arm)

Material: Acid proof steel SS2343
 Weight, kg: 0,15
 Article No.: on request



Support arm

Material: Acid proof steel SS2343
 Length, mm: 800
 Weight, kg: 1,25
 Article No.: on request